

MITSUBISHI PAJERO SPORT | TRITON

2019 ON

INSTALLATION INSTRUCTIONS



Kit Includes:

- Redarc BCDC charger with pre wired harness
- Stainless Steel Redarc BCDC mounting bracket
- 2x midi fuse holders and fuses
- Nuts, bolts and cables ties
- Redarc instruction booklets
- Add a circuit fuse holder (for variable voltage alternator models)

**It is the responsibility of the installer to make sure that all cabling and circuit protection is secured using either the nuts and bolt or cable ties supplied in the kit. The installer should also make sure that all cabling is away from sharp edges, air conditioning lines and any hot or moving parts to avoid damage to the vehicle.*

YOUTUBE INSTALLATION GUIDES:



[Redarc BCDC
charger Installation
Video](#)



[Pirahna Dual
Battery Tray
Installation](#)



[Accessory Harness
Installation](#)



Step 1

Remove front grill as shown in the image.



Step 2

Mount BCDC charger in location shown in the image. Follow Redarc instruction booklet for this part of the install or view the above video.



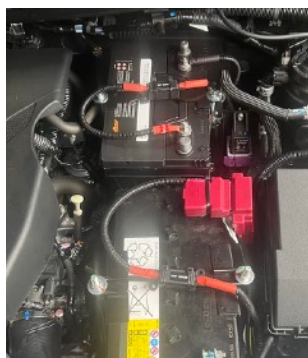
Step 3

Now that the charger is mounted we can begin to route the cables in the direction shown in the image on the left.

MITSUBISHI PAJERO SPORT | TRITON

2019 ON

INSTALLATION INSTRUCTIONS

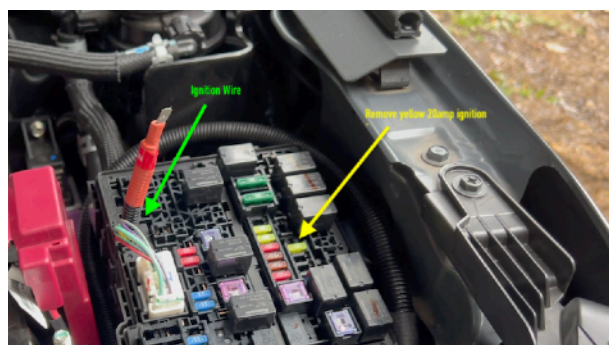


Step 4

Time to make the electrical connections.

First connect **aux battery** by connecting the **black** cable to **negative** and then the **red** cable with fuse holder to **positive** terminal.

Next connect cables marked main battery to the cars original battery. Begin by disconnecting the negative terminal of the cars battery and connect the main batteries positive and then connect the main battery negative terminal. *When connecting the main battery negative terminal the lug must be connected to the bolt on the earth cable that mounts to the body at the base of the battery. Refer to the image to the right for exact point of install.*



Remove fuse box cover from engine bay fuse box. Make sure the **key is off and out of the ignition** in the car. Route cable labeled "ignition" into fuse box as shown by the green arrow in the image on the left. Next remove the yellow 20amp fuse as indicated by the yellow arrow in the image.

Replace this fuse with the 'add a fuse', fuse holder found in the kit and plug the fuse holder lead into the small harness labeled ignition. Use the supplied heat shrink to cover the join and shrink down over join.



Step 5

Now that everything has been installed and connected it is time to test the dual battery system.

Watch the video below to see how to test your dual battery system:

[Testing the Redarc charger](#)



Start the engine and after a short time the vehicle light should come on and the stage light will either be solid on or flashing depending on the state of charge of the battery. This can be seen in the above image.

Your dual battery system is now complete. You are now ready to wire up any accessory you require to the battery.