

# TOYOTA LANDCRUISER

## 70 SERIES KIT



### Kit Includes:

- Redarc BCDC charger with pre wired harness
- Genuine Grey Anderson for Solar Input
- Redarc Laser cut bcdc mounting bracket
- 2x midi fuse holders and fuses
- Nuts/bolts, and cable ties.
- Redarc instruction manuals

*\*It is the responsibility of the installer to make sure that all cabling and circuit protection is secured using either the nuts and bolt or cable ties supplied in the kit. The installer should also make sure that all cabling is away from sharp edges, air conditioning lines and any hot or moving parts to avoid damage to the vehicle.*

## YOUTUBE INSTALLATION GUIDES:



[Redarc BCDC  
Charger Install](#)



[Piranha Dual Battery  
Tray Install](#)



[Accessory Harness  
Install](#)

### Step 1

First start by disconnection the cars main start battery.

Remove front grill. By removing 3x bolts along the top and releasing 2x plastic clips on each bottom corner. See Redarc BDCD Charger install video above for details.

### Step 2

Mount BCDC in the position shown in the Redarc instruction booklet. For this step follow the Redarc instruction booklet.

Click the link or scan the QR code to view the booklet:

[Download: Redarc Instructions Booklet](#)



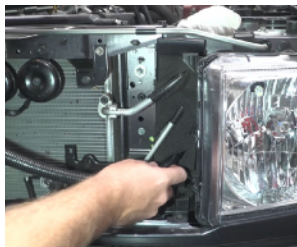
### Step 3

Now that the charger is mounted we can begin to route the cables.

First we will be routing the cables from the BCDC to the midi fuse holders.

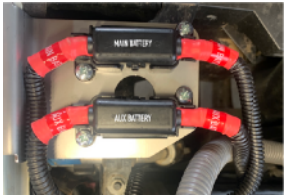
**It is important that these cable are done first to avoid any chance of a short occurring.**

The images below show the route that the cables will take. The cable will be threaded from the front of the radiator where the BCDC is mounted through the foam shown in the image into the engine bay.



### Step 4

Once in the engine bay route the cables up to the midi fuse holders and using an 8mm socket mount the cable marked **main battery** to the fuse holder marked main. Then mount the cable marked **aux battery** to the fuse holder marked aux battery as shown in the image.



Once the 2x 8mm nuts are secured it's time to connect the batteries.

### Step 5

Connect cables to batteries.

Click the link or scan the QR code to see how the electrical connections are done:

[Electrical Connections](#)



First connect **aux battery** by connecting the **black** wire to the **negative** terminal and the **red** wire to the **positive** terminal. Next repeat this step on the main start battery.

Last thing to do before testing is to secure the fuse holder and the harness with cable ties provided to existing wiring harness or brackets under the grill and then reinstall grill.

### Step 6

Now that everything has been installed and connected it is time to test the system.

Watch the video to see how to test your dual battery system:

[Testing the Redarc Charger](#)



Start the engine and after a short time the vehicle light should come on and then the stage light will either be solid on or flashing depending on the state of charge of the battery. This can be seen in the image.

Your dual battery system is now complete, now you are ready to wire up any accessories you want to the battery.